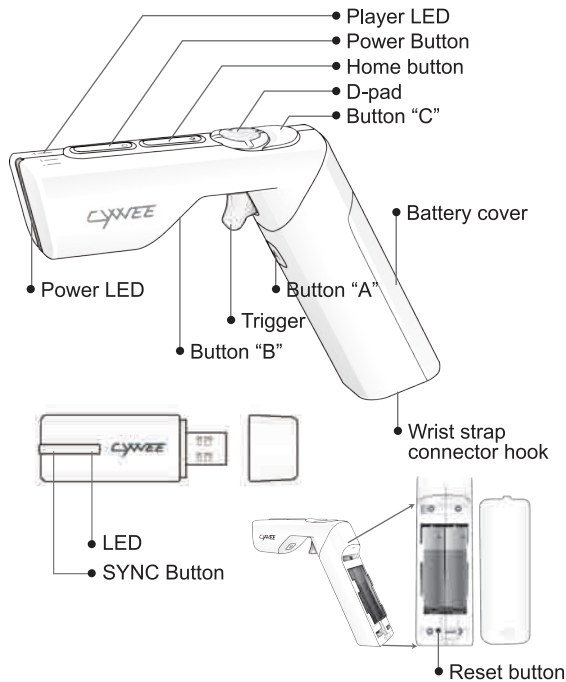
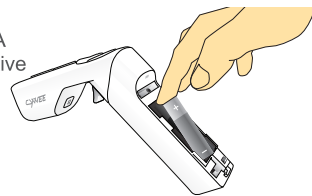


## 1. CYWEE Z Controller & Receiver

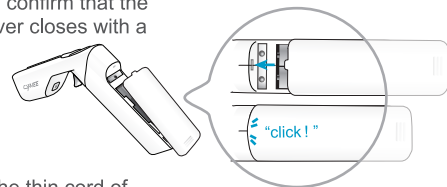


## 2. Preparing the CYWEE Controller

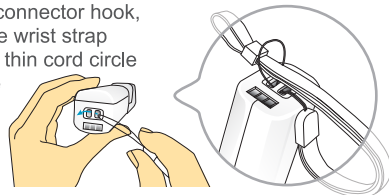
**1** Remove the battery cover and put in two AA alkaline batteries negative (-) end first. Both batteries should be placed in the same direction.



**2** Replace the battery cover, and confirm that the battery cover closes with a "click".

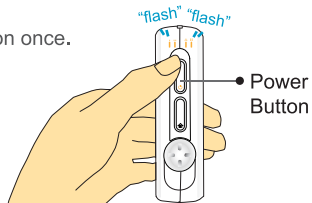


**3** Insert the thin cord of the wrist strap through the wrist strap connector hook, and loop the wrist strap through the thin cord circle and pull the wrist strap out gently.

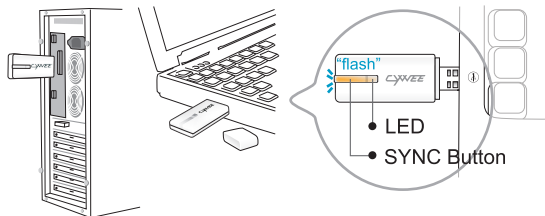


## 3. Synchronizing the CYWEE Controller and receiver with the computer

- 1 Press  button once.



- 2 Place CyWee receiver into USB port and press SYNC button once. The receiver LED will flash for 6-8 seconds before a connection is made.



- 3 Press any button on the CyWee Controller to complete the synchronization. After a successful connection, the player 1 LED should stay lit.



## 4. User Modes

- 1 3D Mouse Mode  
1-1 Trigger – Mouse left click



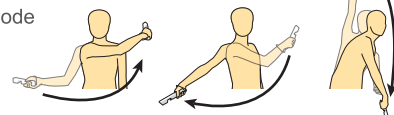
- 1-2 Button "C" – Mouse right click



- 2 Gun Mode



- 3 Sports Mode



- 4 Racing Mode (CYWEE logo in your left hand, hinge pointing up)



- 5 Aviation Mode  
(CYWEE logo in your left hand, hinge pointing forward)

